



Government of **Western Australia**  
Department of **Health**

# Older Adult Integrated Healthcare

Ageing Australia – WA State Conference 2025

28 May 2025

A/Prof George Eskander

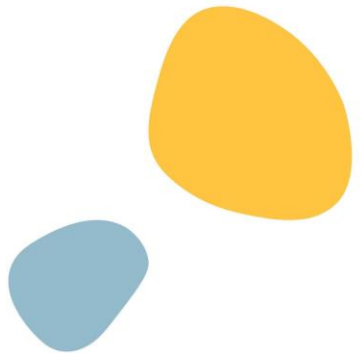
Executive Director, Clinical Performance and Transformation



# Acknowledgement of country

We acknowledge the traditional custodians of the land upon which we meet today and pay our respects to elders past, present and emerging.

# Introduction



# Setting the Scene – demographic changes



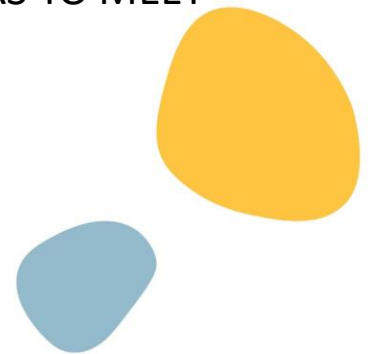
IN 5 YEARS, WA WILL HAVE AN  
**ADDITIONAL 55,000 PEOPLE OVER  
75 YEARS**



PROVIDERS ARE **97-8% FULL** AND  
HAVE LONG WAITLISTS.



WA **NEEDS ANOTHER 2800 AGED  
CARE BEDS** IN 4 YEARS TO MEET  
DEMAND.





# Setting the Scene – system reforms



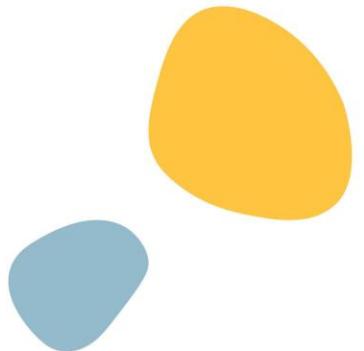
National Health Reform  
Agreement

Significant State/Commonwealth reform



Primary care investment reform

Strengthening Medicare initiatives  
Uplifts in bulk billing



# Setting the Scene – strengths & opportunities



Minister for Aged Care

State Government and Aged Care  
Sector Collaboration

Workforce commitment to person  
centered care



# State First Dementia Action Plan



Aligned to the National Dementia Action Plan



Training for hospital staff – in partnership with NGOs



Communications campaigns to support management at home



Promoting a 'dementia friendly approach'



Review and reconfiguration of existing service

# The Virtual Hospital = care closer to home

## WA Virtual ED

- Emergency care delivered virtually
- To support patient in situ
- And/or escalated to '4 walls' hospital



## Community Virtual Health Care includes:

- *Virtual care + hands-on care*
- *Remote monitoring (incl escalation pathways)*
- *Remote up-skilling/education of on the ground clinicians*
- *Seamless transitions of care*



In people's private homes and residential care homes



Connects to services delivered in the community



## Enablers:

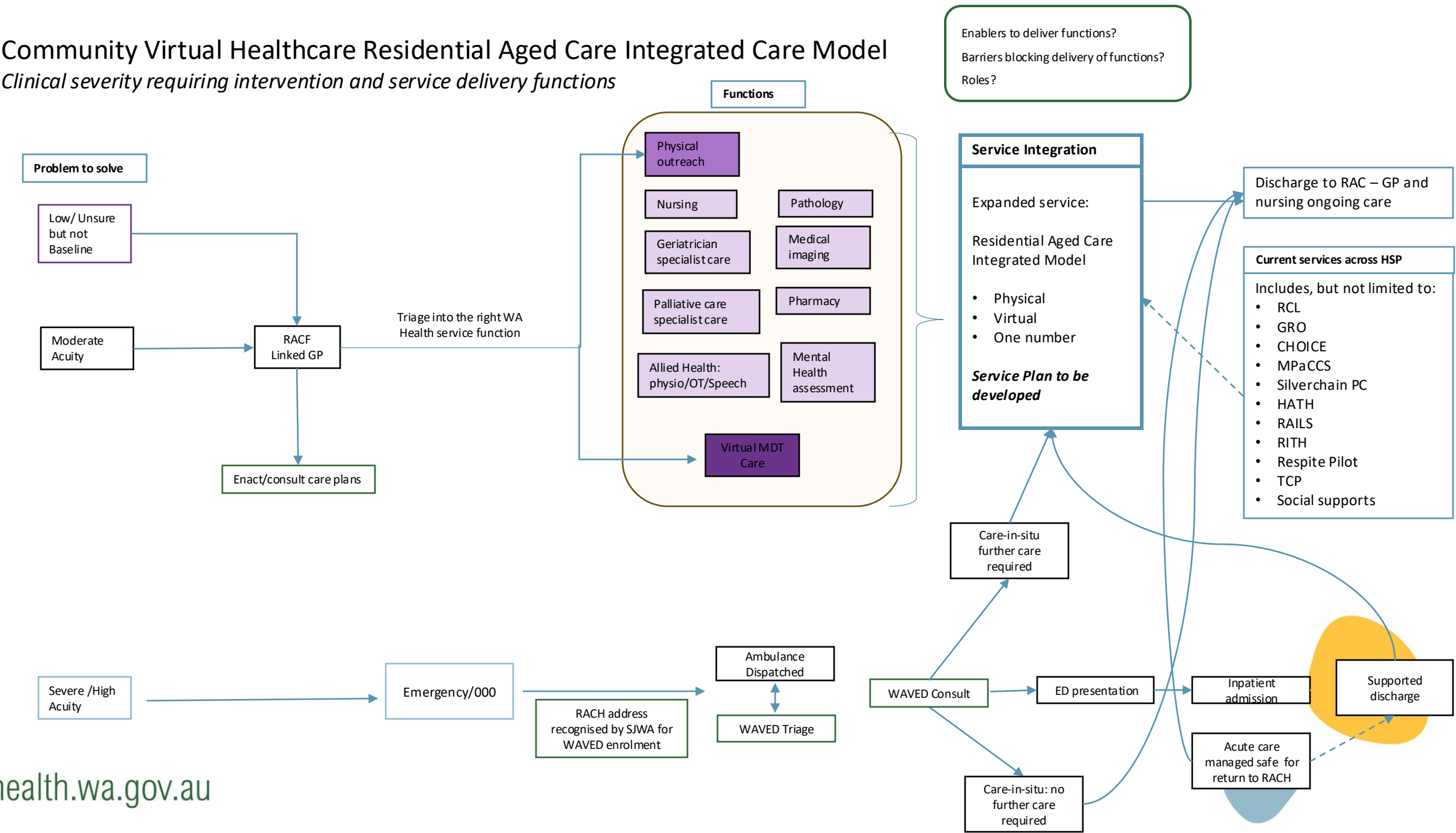
- ❖ Mobile imaging and pathology
- ❖ Community based/outreach services
- ❖ Digital system integration and/or information portals
- ❖ Seamless coordination
- ❖ Leveraging shared relevant staff





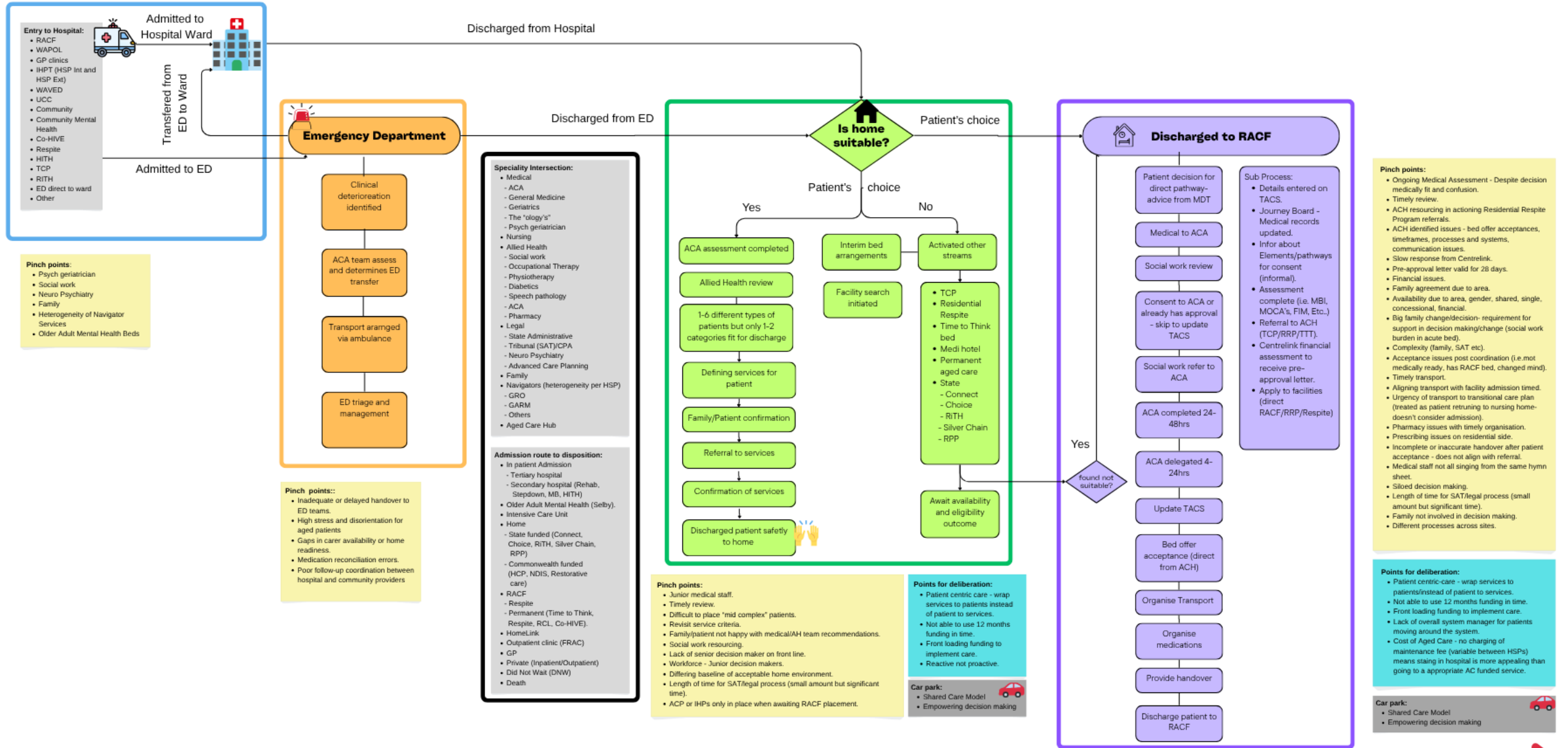
# Community Virtual Healthcare Residential Aged Care Integrated Care Model

Clinical severity requiring intervention and service delivery functions



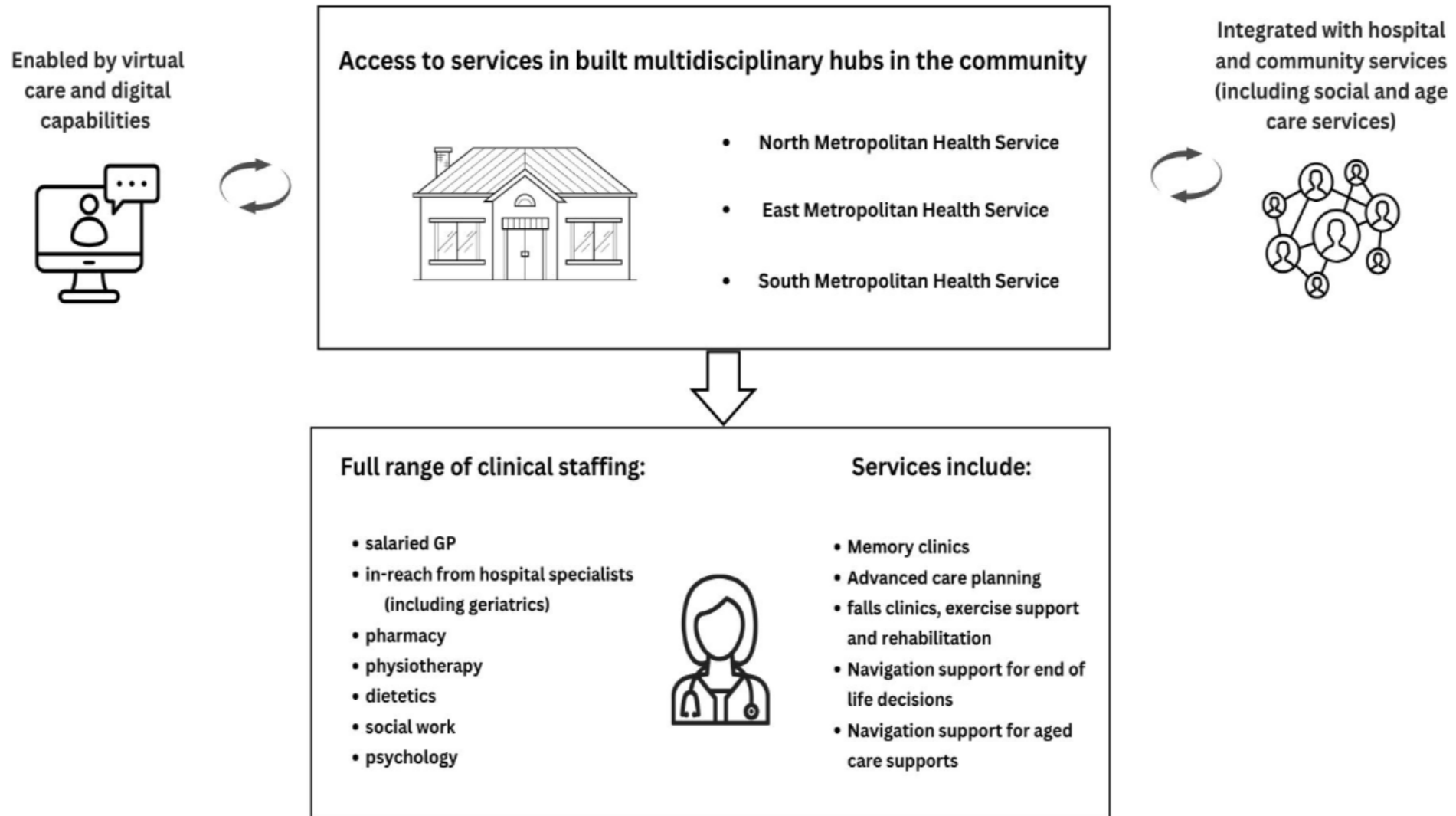
# Assertive Aged Care Discharge Current Process

## Patient Identified for Discharge Planning

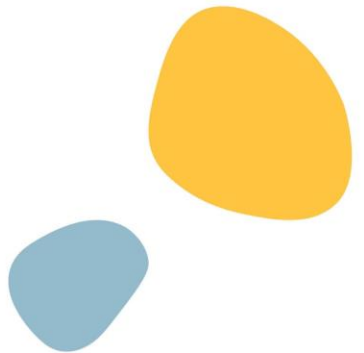
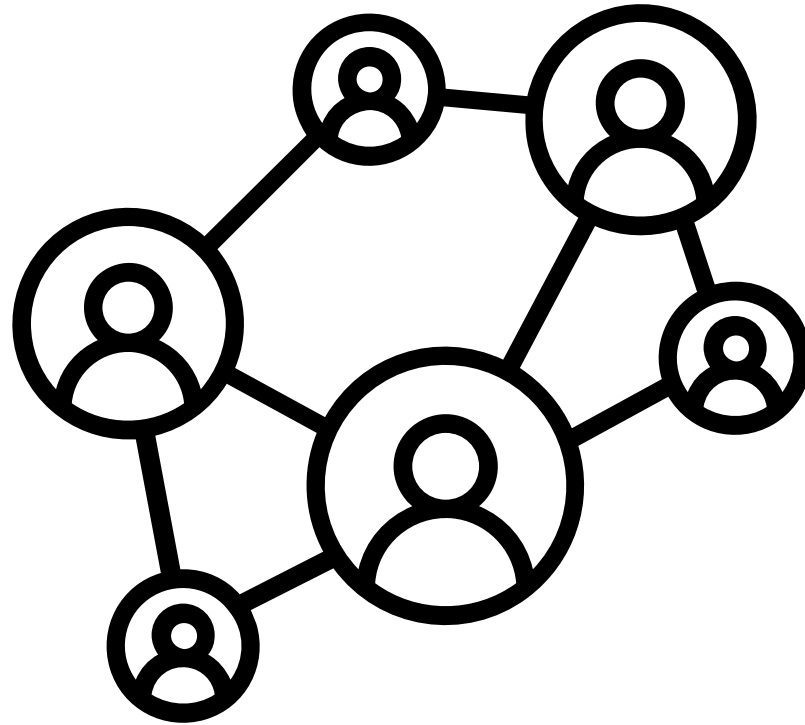


# Older Adult Community Integrated Care Hubs

## Older Adult Community Integrated Care Hubs



# Closing - achieving our vision together



# Questions?

